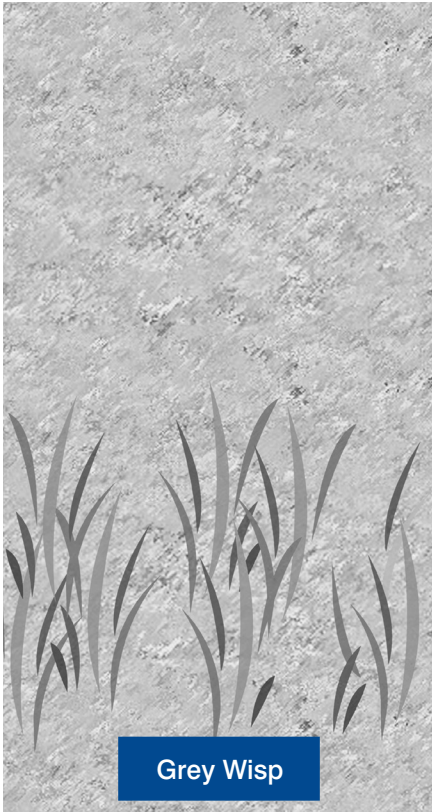
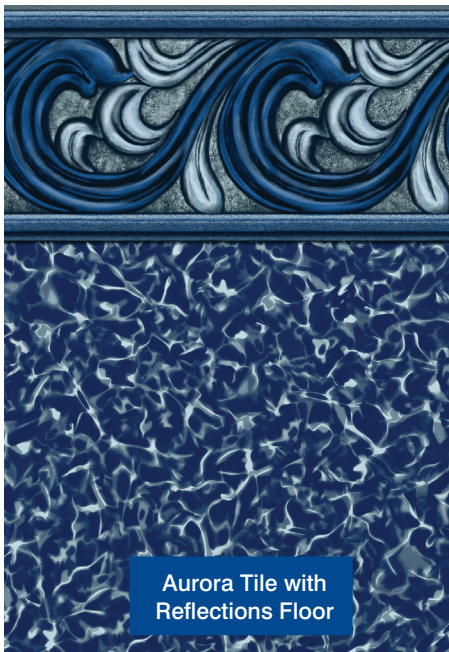


Wall Pattern Options:



Liners Options:



LED Lighting Options:



Liner patterns are available as noted above. An upcharge will be incurred to switch pool specific liner pattern options.

The strength and durability of all our liners are backed by a 15 year limited warranty.



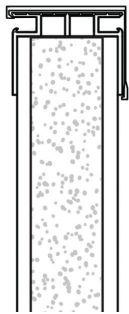
In addition, every Metric Series Liner comes with our LinerPLUS Extended Service Coverage. LinerPLUS covers up to \$500 in labor and water expenses on any liner replacement covered under the standard 15 year warranty.

Wall and Liner Pattern colors are representative only and may vary slightly from actual colors. Please see dealer to view actual samples.



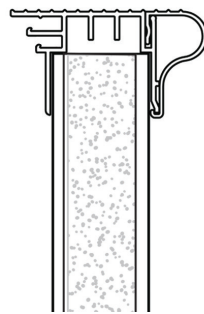
Standard 2" Coping

Most Radiant Metric pools come with our Standard 2" coping. Available in both white and grey, this sturdy PVC coping offers an inside track to hold your liner and an outer track to hold your Metric Custom Winter Cover. *(Not available on Metric Grecian Pools)*



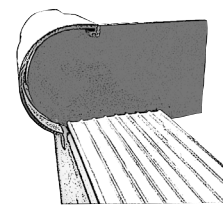
Premium 4" Coping

The Metric Premium Coping boasts a wide 4" profile, elegant bullnose exterior finish and double tracks inside the pool. Available in both white and grey, the internal double track accommodates the liner and a Radiant custom winter cover. *(Not available on Metric Freeform or Grecian Pools)*



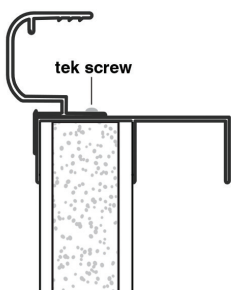
Transition with Mixed Coping

When a semi-inground installation leaves part of your pool inground and part of your pool above the ground, these End Caps transition the installation of both CP2 and Metric plastic coping. The End Cap provides a clean finish to the concrete and fits inside the CP2 coping before the lower profile of the Standard or Premium coping begins. *(Not available on Metric Grecian Pools)*



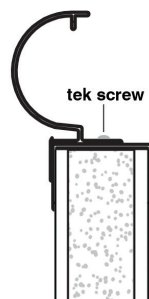
5/4 Deck Coping

With 5/4 Deck coping, you can add a wood or composite deck and have a clean finished edge for a smooth transition from deck to pool. *(Available on Metric Grecian Pools only)*



CP2 Coping

CP2 Concrete Receptor coping is used when pouring a concrete deck. The texture coated aluminum bullnose design creates a seamless transition from deck to pool and provides a handhold for small hands to grasp. *(Available on All Metric Pools)*



Paver/Cantilever Coping

Aluminum paver coping is perfect if you want to finish your pool with paver stones or poured cantilever edge. This finishing option creates a beautiful flush appearance around your entire pool. *(Available on All Metric Pools)*

